



Doulton House, Chelsea Creek  
Fulham SW6

GARTON JONES.COM



# Doulton House, Chelsea Creek Fulham, SW6

GARTON JONES.COM

11 Park Street  
Chelsea Creek  
London  
SW6 2FS

Sales +44 (0) 20 7824 7090  
paul@gartonjones.com  
www.gartonjones.com

## £950,000 Leasehold

Set on the fifth floor of a modern riverside building in Chelsea Creek, this beautifully presented two-bedroom apartment 890sqft (82sqm) offers bright, stylish living with the Right to Park. Spanning well-planned accommodation, the apartment features a generous open-plan reception room with access to a private balcony, a fitted media unit, and a fully integrated modern kitchen. The principal bedroom includes an ensuite bathroom and built-in wardrobes, while the second double bedroom is served by a luxury guest bathroom. Additional features include comfort cooling, underfloor heating, and ample hallway storage. Development Amenities include 24-hour concierge, access to The Spa: indoor pool, gym, sauna, steam room & treatment room, Landscaped communal gardens, Built by Berkeley St George.

Leasehold - 999 from 2010  
Service Charge - £7390,58 PA  
Ground Rent - £450 PA

London Borough of Hammersmith & Fulham  
Council (Band G)

EPC — B (82)

EPC certificate available on request.

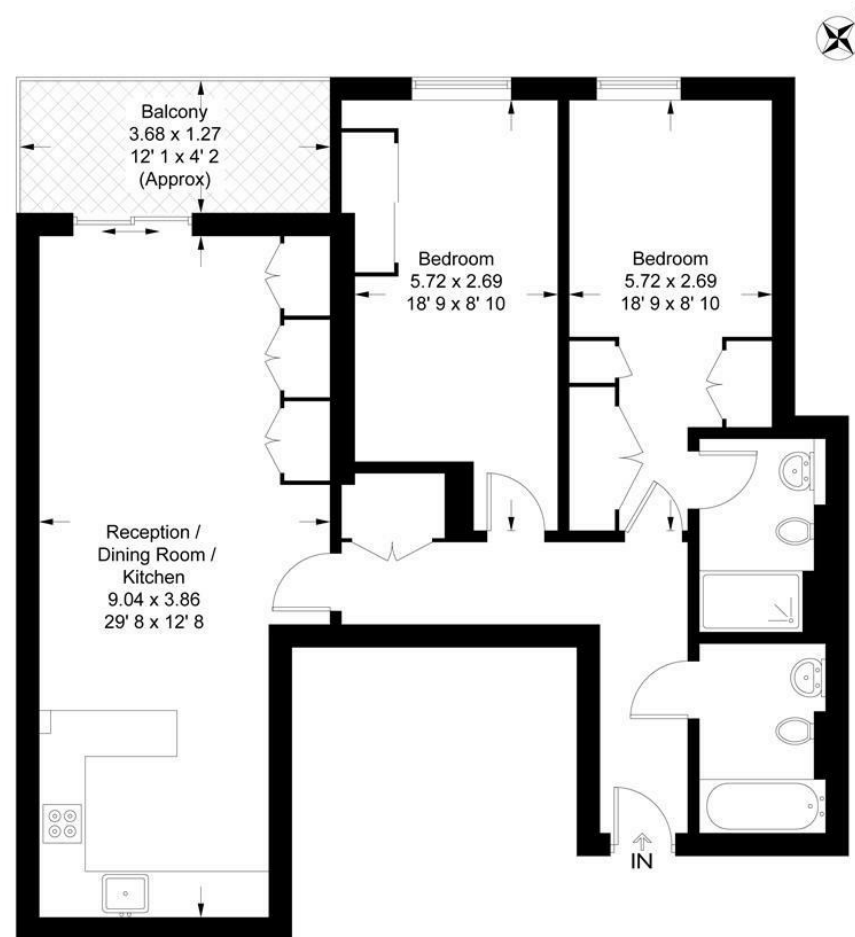
- Two Bedroom Apartment
- Fifth Floor With Lift
- Spacious Balcony
- Immaculately Presented Throughout
- Open Plan Lounge With Built In Media Unit
- Offered With Parking
- 24 Hour Concierge
- Residents Spa — Gymnasium & Indoor Pool
- Easy Reach Of Imperial Wharf Overground Station
- EPC Rating B(82)



**Doulton House**

Approximate Gross Internal Area = 890 sq ft / 82.7 sq m  
Balcony = 50 sq ft / 4.7 sq m

GARTON JONES  
LONDON

**Fifth Floor**

This plan is not to scale and must be used as layout guidance only. All measurements and areas are approximate and should not be relied upon to provide accurate information. This plan must not be relied upon when making property valuations, design considerations or any other such relevant decisions. We accept no responsibility or liability (whether in contract, tort or otherwise) in relation to any loss whatsoever arising from or in connection with any use of this plan or the adequacy, accuracy or completeness of it or any information within it.





